



Where Luxury is Pocket Friendly



Let's simplify owning a home

RG Group is focused on **bringing transparency** to the doors of the customers. You don't need to do the **Cumbersome Calculations** of **built up area** and super built up area ratios. Rates being quoted are on built up area basis.

■ What You Pay for is What You Get

The built up area specified is the area you get and any variation thereof shall be adjusted in the cost at the time of offering possession.

■ Unique Payment Rebate on Early Payment of Installment

Payment of installment before its due date will be entitled to an interest @12% p.a. and the rebate amount will be adjusted in the last/final installment.

■ Value for Money

- * Rates on built up area basis
- * Assured timely possession with penalty clause
- * Fixed price - No escalation for the booked flats
- * No hidden cost

■ Free of Cost Benefits

- * Spacious Modular Kitchen
- * Wooden Flooring in Master Bedroom
- * Cupboards in each Bedroom

■ No Additional Charges for

- * One Covered Car Parking in the Basement
- * External Electrification Charges
- * Power Back up of 2/3 KVA
- * Fire Fighting Charges
- * Club Membership
- * Lease Rent



Landscape Podium



Amenities

Project Highlights

- Residential Complex in 18.4 acres
- Only 11 towers i.e. one tower per 1.5 acres
- Huge landscape garden of 7 acres, centrally located at podium level
- Each tower to have 4 spacious lifts
- 3 tier security system with CCTV provision
- Vehicular movement free raised landscape podium
- 1 Acre forest
- Floating garden
- Dedicated children play area
- Earmarked area for Tennis, Badminton & Basketball Court
- Jogging trail and cycling track
- Open air theatre

Club Facilities

- Swimming Pool, Toddler Pool
- Health Club, Gymnasium & Yoga Centre
- Steam & Sauna
- Each tower to have 4 spacious lifts
- Indoor Games like Billiards, Pool, Table Tennis
- Food Court & Cafeteria
- Multipurpose Hall

Vaastu & Eco-friendly

- Vaastu compliant layout plan
- Eco-friendly construction
- Water Harvesting
- Solar energy utilization

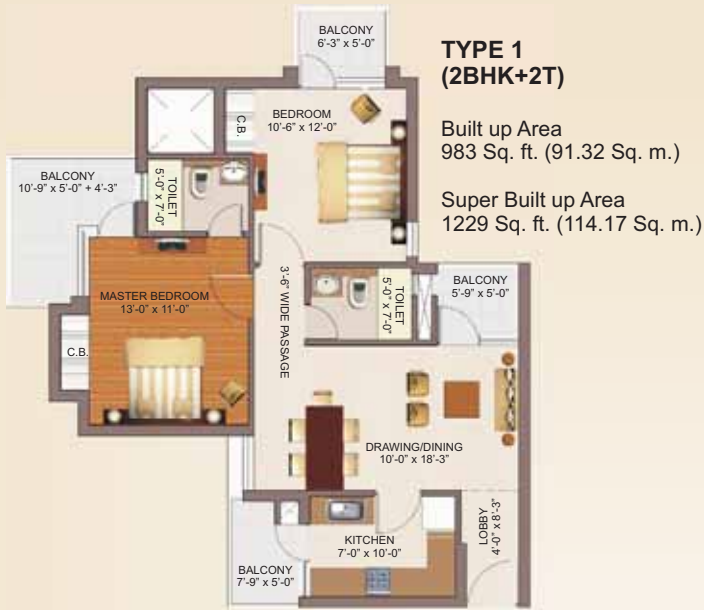
Conveniences

- Unisex Beauty Parlor
- 24x7 Chemist Shop
- Super Market

SITE PLAN



FLOOR PLANS



TOWER PLANS

TOWER A



TOWER B



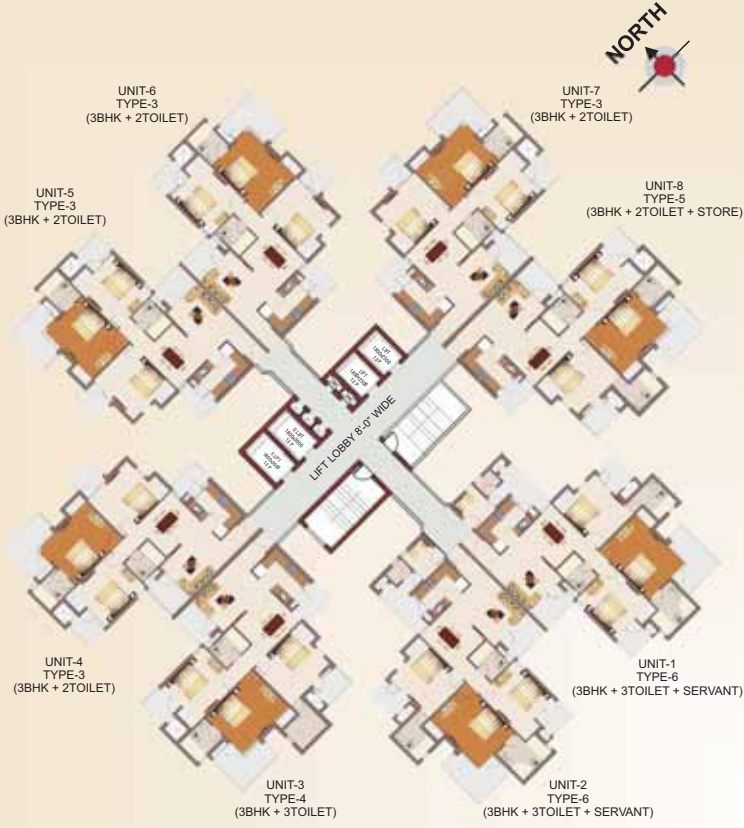
TOWER C



TOWER D



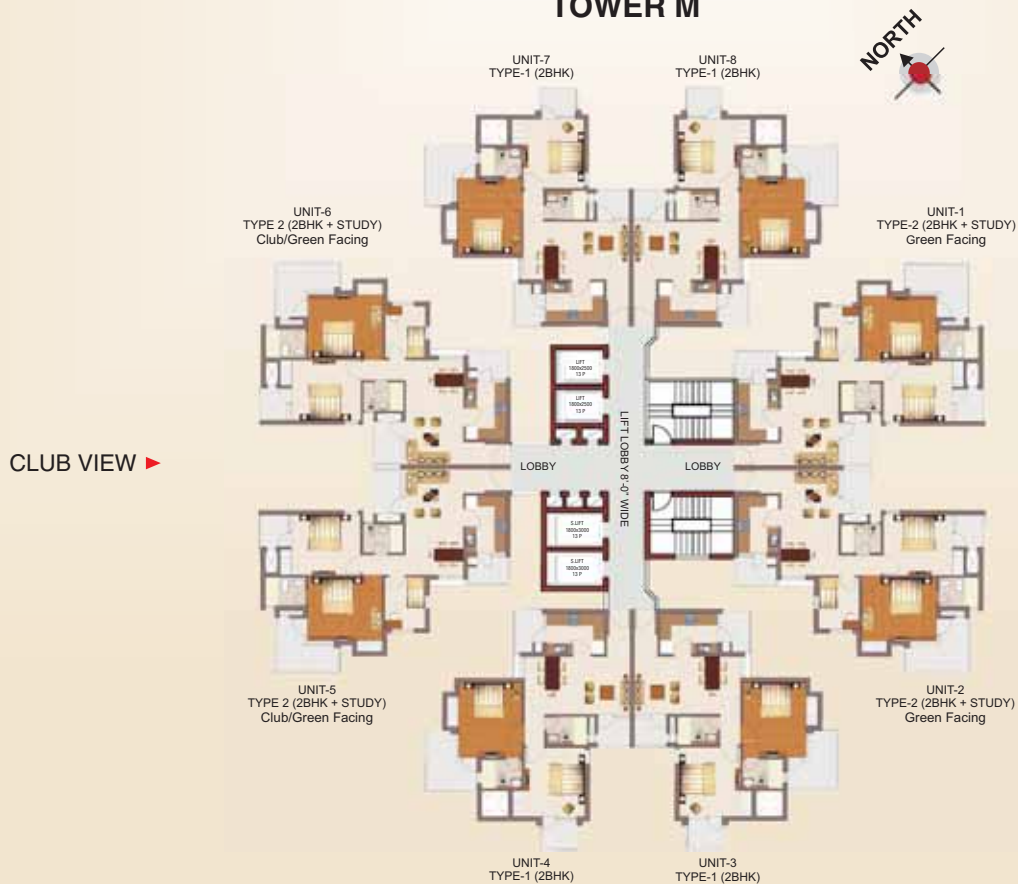
TOWER E



TOWER F



TOWER M



S P E C I F I C A T I O N S

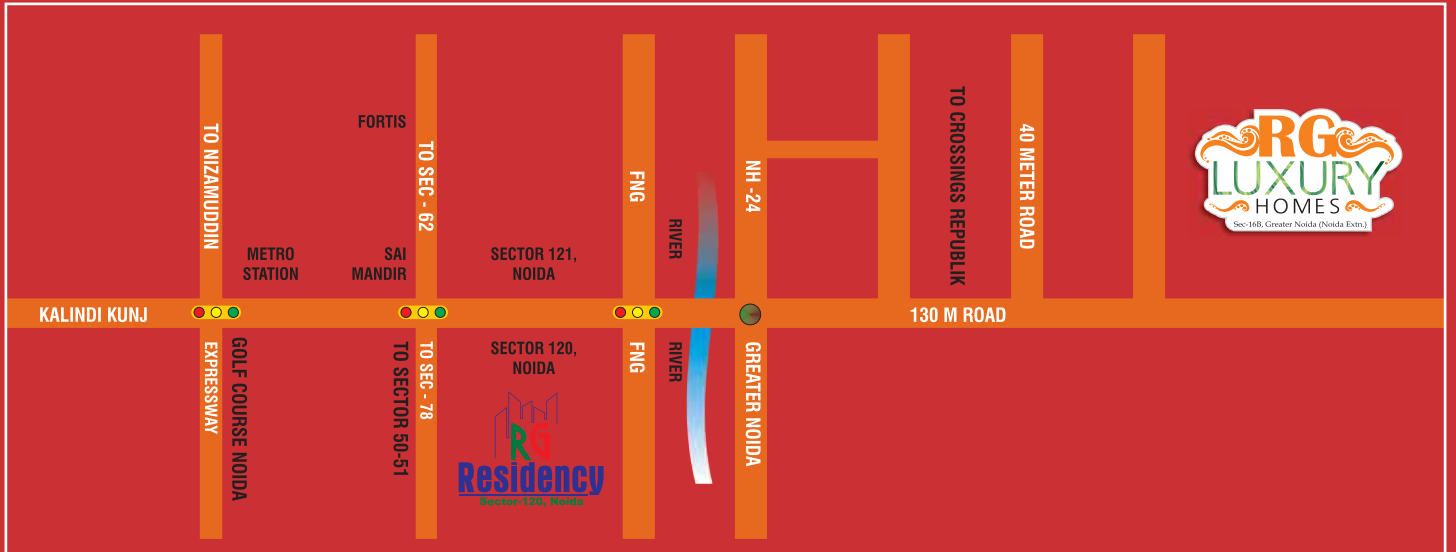
LOCATION	FLOORING	WALLS	CEILINGS	INTERNAL DOORS	EXTERNAL DOORS & WINDOWS	ELECTRICAL FITTINGS	WARDROBE	FIXTURES & FITTINGS
Drawing / Dining Room	Vitrified tiles Brand Kajaria / Nitco or imported equivalent	Acrylic emulsion Paint Brand Berger / Asian or equivalent	POP	Skin moulded paneled doors	Decorative solid hard wood entry door. Powder coated/ Anodized Aluminum or UPVC glazed Balcony doors & Windows	Modular electric switches \ Brand Anchor, Clipsal or equivalent		
Master Bedroom	Laminated wooden flooring	Acrylic emulsion Paint Brand Berger / Asian or equivalent	POP	Skin moulded paneled door shutter	Powder coated/ Anodized Aluminum or UPVC glazed Balcony doors & Windows	Modular electric switches Brand Anchor, Clipsal or equivalent	Wooden Wardrobe with Laminated Door Shutters	
Bedroom / Study	Vitrified tiles Brand Kajaria / Nitco or imported equivalent	Acrylic emulsion Paint Brand Berger / Asian or equivalent	POP	Skin moulded paneled door	Powder coated/ Anodized Aluminum or UPVC glazed Balcony doors & Windows	Modular electric switches Brand Anchor, Clipsal or equivalent	Wooden Wardrobe with Laminated Door Shutters	
Toilet (Master Bedroom)	Anti Skid Ceramic Tiles Brand Kajaria / Nitco or imported equivalent	Combination of Ceramic tiles Brand Kajaria / Nitco or imported equivalent & Oil bound Distemper. Vanity Mirror.	POP	Skin moulded paneled door	Powder coated/ Anodized Aluminum or UPVC glazed Balcony doors & Windows	Modular electric switches Brand Anchor, Clipsal or equivalent		White chinaware: Hindware / Cera or equivalent, single Lever C.P. fittings: Jaguar or equivalent.
Toilet (Other Bedrooms)	Anti Skid Ceramic Tiles of Marvito / Kajaria/ Rak/Nitco or equivalent	Combination of Ceramic tiles Brand Kajaria / Nitco or imported equivalent & Oil bound Distemper. Vanity Mirror.	POP	Skin moulded paneled door shutter	Powder coated/ Anodized Aluminum or UPVC glazed Balcony doors & Windows/ ventilator	Modular electric switches Brand Anchor, Clipsal or equivalent		White chinaware: Hindware / Cera or equivalent, single Lever C.P. fittings: Jaguar or equivalent.
Kitchen	Vitrified Tiles Brand Kajaria/Nitco or imported equivalent	Combination of Ceramic tiles Brand Kajaria/ Nitco or imported equivalent, Oil bound Distemper	POP		Powder coated/ Anodized Aluminum or UPVC glazed Balcony doors & Windows	Modular electric switches Brand Anchor, Clipsal or equivalent		Modular Kitchen complete with overhead cabinets, Granite Working platform & Stainless Steel Sink and RO : Inalsa / Kent or equivalent
Balconies	Antiskid Ceramic Tiles Brand Kajaria / Nitco or imported equivalent		POP					
Entrance Lobby/ Lift Lobby/ Corridors	Combination of Marble Stone / Granite	Granite / Marble / Tiles Cladding upto 4 feet and Texture Paint above	POP					
External Finish	Combination of Texture Paint / Wash down Grit Finish & Waterproof Cement Paint.							

Security system

Intercom System Linked to Guardhouse & Entrance Lobby of each tower at Ground Floor. CCTV for Basement parking and Entrance lobby. Automatic Boom barriers with car sensors at entry & exit of the complex and at entry & exit of the basement parking

* Marble/Granite being natural materials has inherent characteristics of colour and grain variations. (Above are the proposed specifications which are subject to change without any prior notice)

LOCATION MAP



3 Mins. drive from FNG Corridor

5 Mins. drive from Sec. 120, Noida

7 Mins. drive from Sai Mandir

10 Mins. drive from Fortis Hospital

10 Mins. drive from Sec. 32 NOIDA City Centre Metro Station

15 Mins. drive from Atta Market, Sec. 18 Noida

20 Mins. drive from DND Flyway

For more details : 011-47770580, 81, 82, 83



Corporate Office:
501, RG Trade Tower, Plot No. B-7
Netaji Subhash Place, Pitampura-Delhi - 110034
Email: rgluxury@rggoup.in

Site Office:
Plot No. GH-07 A
Sec.-16 B
Greater Noida (Noida Extension)
(UP) - 120 001

SMS
RG to
56263

Website: www.rggoup.in

All Specifications, designs, conditions are only indicative and some of these can be changed at the discretion of the builder. These are purely conceptual and constitute no legal offerings. 1 sq. mt. = 10.764 sq. ft.

